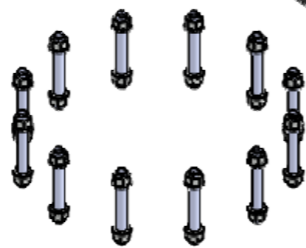
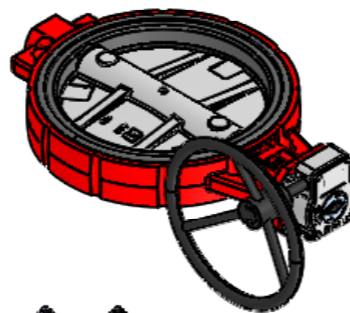
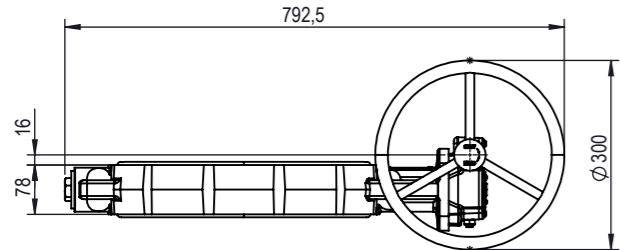


| REV. | CHANGE | DATE | DESIGNED | APPROVED |
|------|----------------------|------------|----------|----------|
| C | ITEM NUMBERS CHANGED | 20.08.2021 | RIL | VPA |

Butterfly valve damper DN350 PN6/10/16

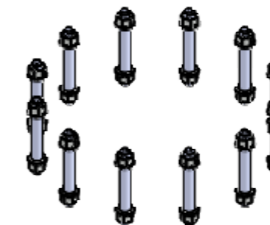
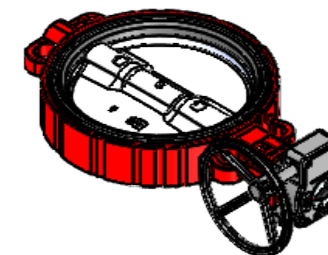
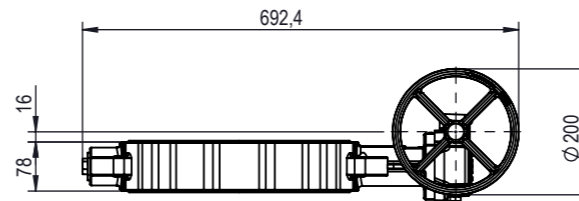
(51.44 kg)



Butterfly valve damper connection kit DN 350
(3.93 kg)

Butterfly valve damper DN300 PN6/10/16

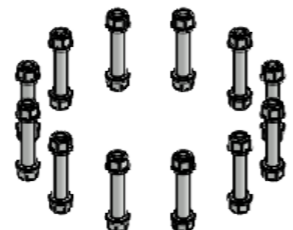
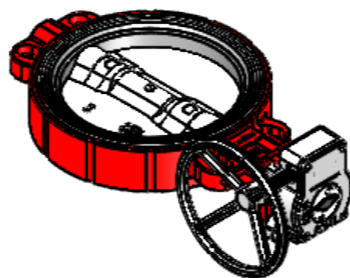
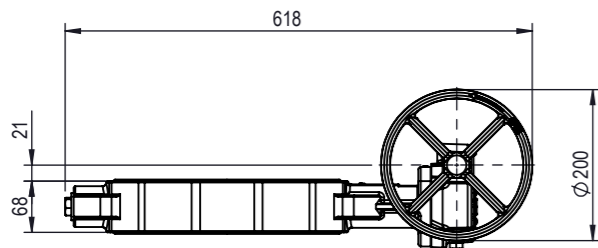
(37.67 kg)



Butterfly valve damper connection kit DN 300
(3.93 kg)

Butterfly valve damper DN250 PN6/10/16

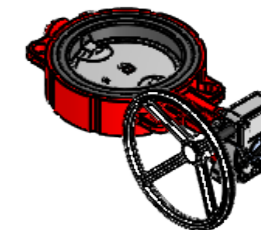
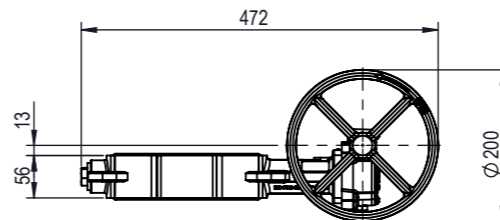
(27.31 kg)



Butterfly valve damper connection kit DN250
(3.54 kg)

Butterfly valve damper DN150 PN6/10/16

(12.44 kg)



Butterfly valve damper connection kit DN150
(2.36 kg)

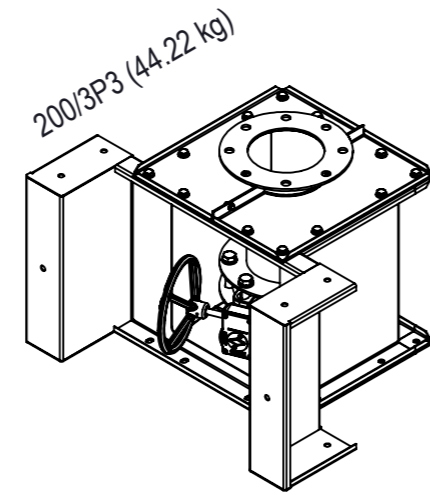
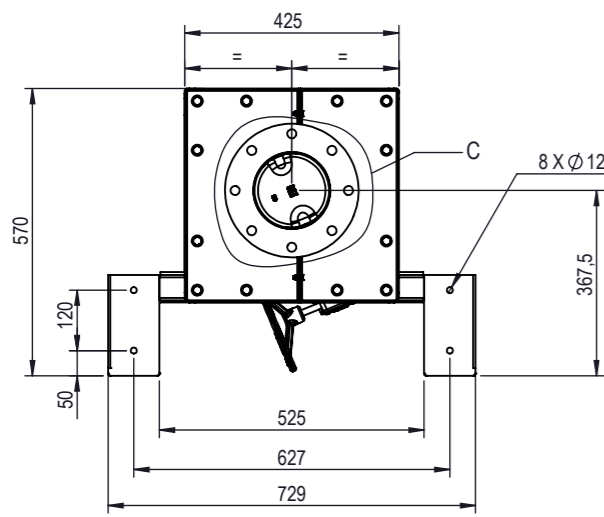
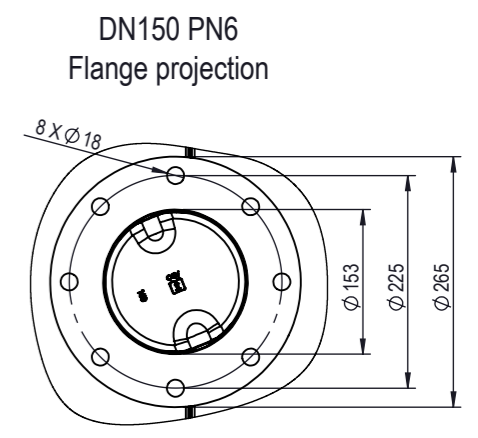
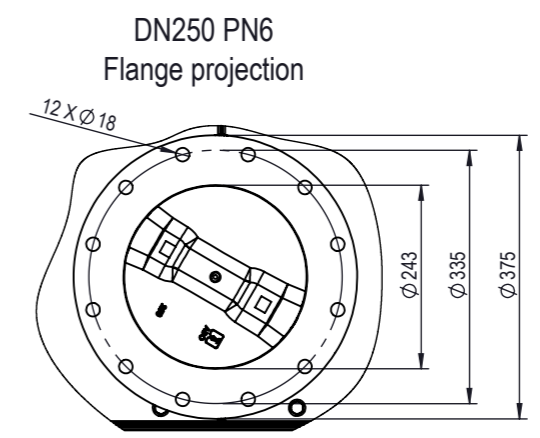
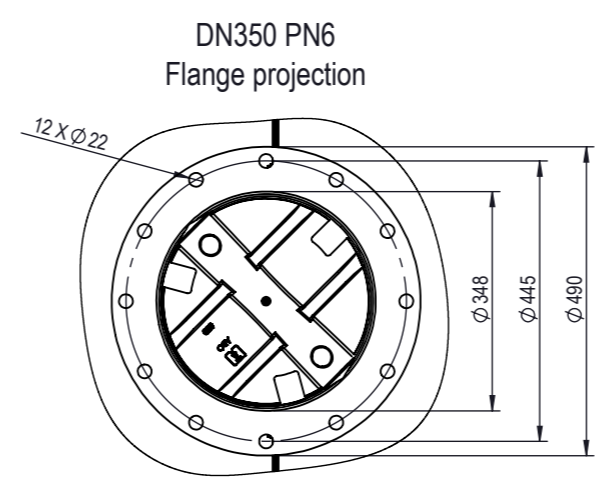
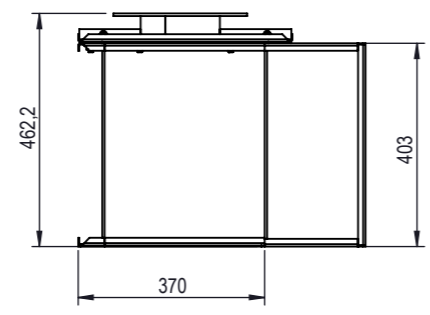
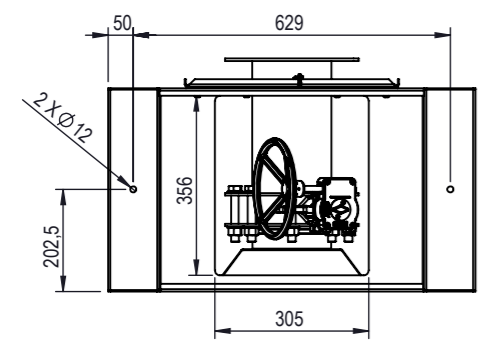
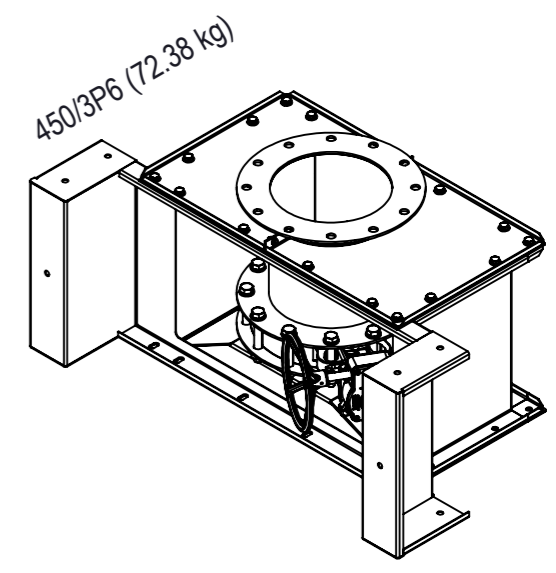
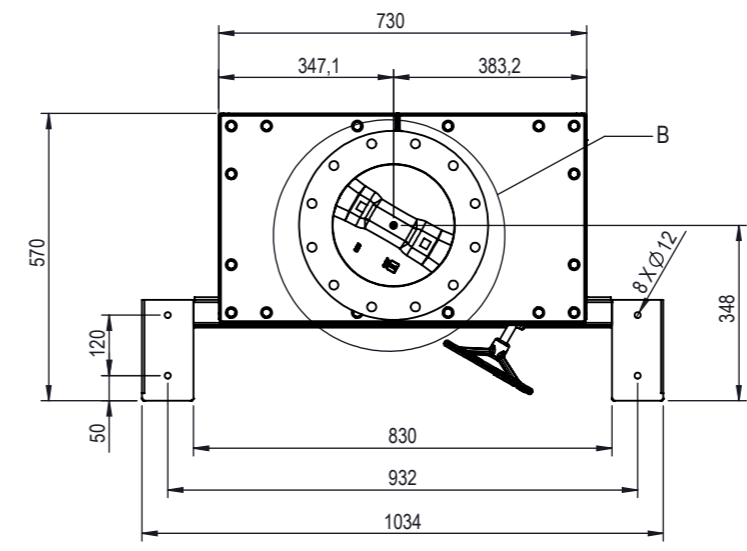
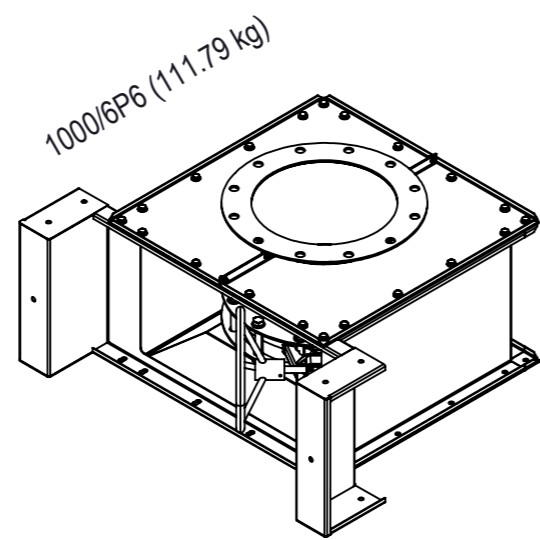
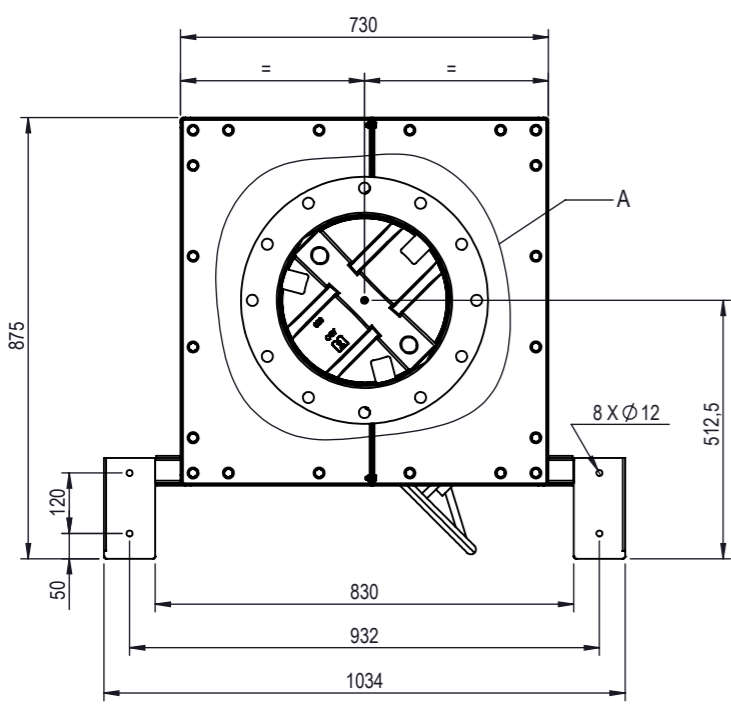
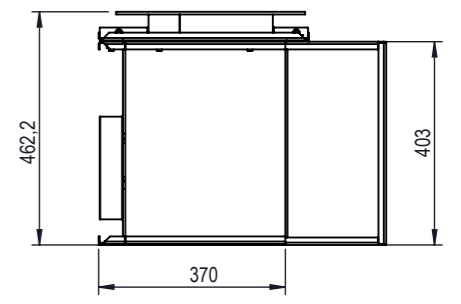
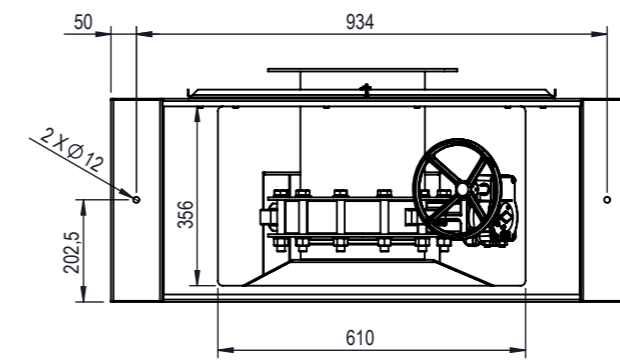
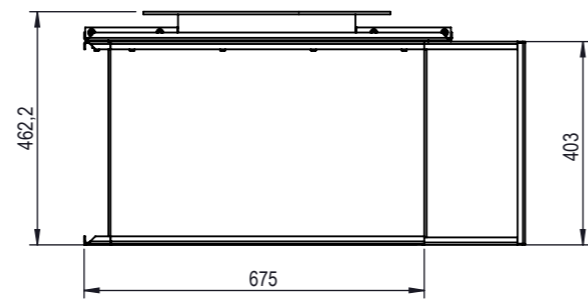
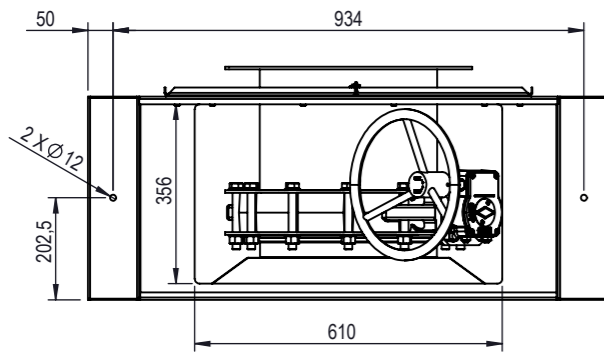
Butterfly valve damper description:
 Wafer body
 Disc material: SS 1.4308
 EPDM seat
 Manual gearbox with handwheel
 (Other materials / features on request)

| CAMSAFE BUTTERFLY VALVE DAMPER | | | | |
|---|---------------|---------------------------------|---------------|---------|
| BUTTERFLY VALVE DAMPER | | | | |
| Version | DN150 PN6 | DN250 | DN300 | DN350 |
| Item No. | 1072240 | 1072243 | 1072244 | 1068201 |
| BUTTERFLY VALVE DAMPER CONNECTION KIT | | | | |
| Version | DN150 | DN250 | DN300 / DN350 | |
| Drawing | 5349-9000-100 | 5349-9000-101 | 5349-9000-102 | |
| Material / Finish | A4 | A4 | A4 | |
| Item No. | 1076060 | 1076061 | 1076063 | |
| General tolerances ISO 2768 - vL unless otherwise specified | | DESCRIPTION | | |
| DIMENSION | TOLERANCE | CamSafe Damper STD Scope | | |
| < 30 | ± 1 | Gastight butterfly valve damper | | |
| > 30 to 120 | ± 1,5 | PROJECT | | |
| > 120 to 400 | ± 2,5 | - | | |
| > 400 to 1000 | ± 4 | LAST REVISION | | |
| > 1000 to 4000 | ± 6 | 20.08.2021 | | |
| > 4000 | ± 8 | WEIGHT | | |
| Break sharp angles 0,5 to 2 | | see drawing | | |
| | | DRAWING REF. | | |
| | | 5349-0000-108 | | |
| | | SHEET | | |
| | | 1/3 | | |
| | | SIZE | | |
| | | A3 | | |
| | | SCALE | | |
| | | 1:8 | | |



NB: The copyright of this drawing remains with Camfil. Contents must not be used, copied or disclosed to third parties without prior written consent. All rights reserved.

| REV. | CHANGE | DATE | DESIGNED | APPROVED |
|------|----------------------|------------|----------|----------|
| C | ITEM NUMBERS CHANGED | 20.08.2021 | RIL | VPA |

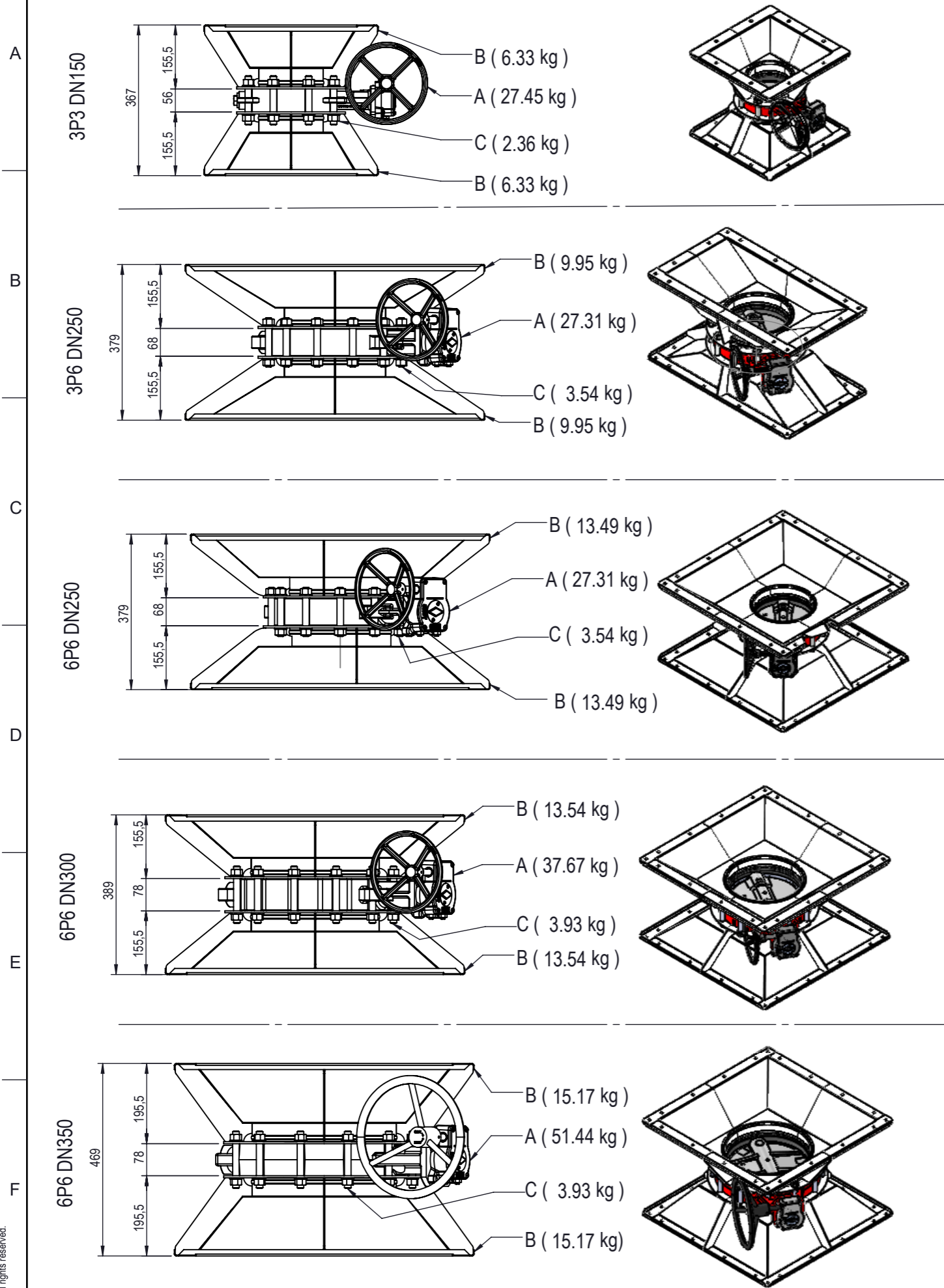


| CAMSAFE BUTTERFLY VALVE DAMPER MODULE | | | | | | | | | |
|---|--|---|--|---|--|--|--|--|--|
| Version | | 200/3P3 | | 450/3P6 | | 1000/6P6 | | BUTTERFLY VALVE DAMPER MODULE | |
| Size | | 5399-1104-970 | | 5399-1104-980 | | 5399-1104-990 | | | |
| Drawing | | 316L * | | 304L * | | 316L * | | 304L * | |
| Material / Finish | | Painted * 1076077 | | Painted * 1076056 1076053 | | Painted * 1076078 1076054 | | Painted * 1076079 1076058 1076055 | |
| Item No. | | Painted * | | 316L * | | 304L * | | | |
| Material | | SHEETMETAL - EN10025-2 - S235JR(G2) (1.0038) | | SHEETMETAL 316L - EN10088-2 - X2CrNiMo17-12-2+2B (1.4404) | | SHEETMETAL 304L - EN10088 - X2CrNi18-09 (1.4307) | | | |
| Finish | | Painted RAL 9010 SPEC025 | | Pickled & Glass Blasted SPEC026 | | Pickled & Glass Blasted SPEC026 | | | |
| General tolerances ISO 2768 - vL unless otherwise specified | | | | | | | | | |
| DIMENSION | | TOLERANCE | | | | | | | |
| < 30 | | ± 1 | | | | | | | |
| > 30 to 120 | | ± 1,5 | | | | | | | |
| > 120 to 400 | | ± 2,5 | | | | | | | |
| > 400 to 1000 | | ± 4 | | | | | | | |
| > 1000 to 4000 | | ± 6 | | | | | | | |
| > 4000 | | ± 8 | | | | | | | |
| Break sharp angles 0,5 to 2 | | | | | | | | | |
| DESCRIPTION | | CamSafe Damper STD Scope WM integration complete with damper | | | | | | | |
| PROJECT | | - | | LAST REVISION | | 20.08.2021 | | WEIGHT | |
| DRAWING REF. | | 5349-0000-108 | | SHEET | | 2/3 | | see drawing | |
| SCALE | | 1:10 | | SIZE | | A3 | | | |

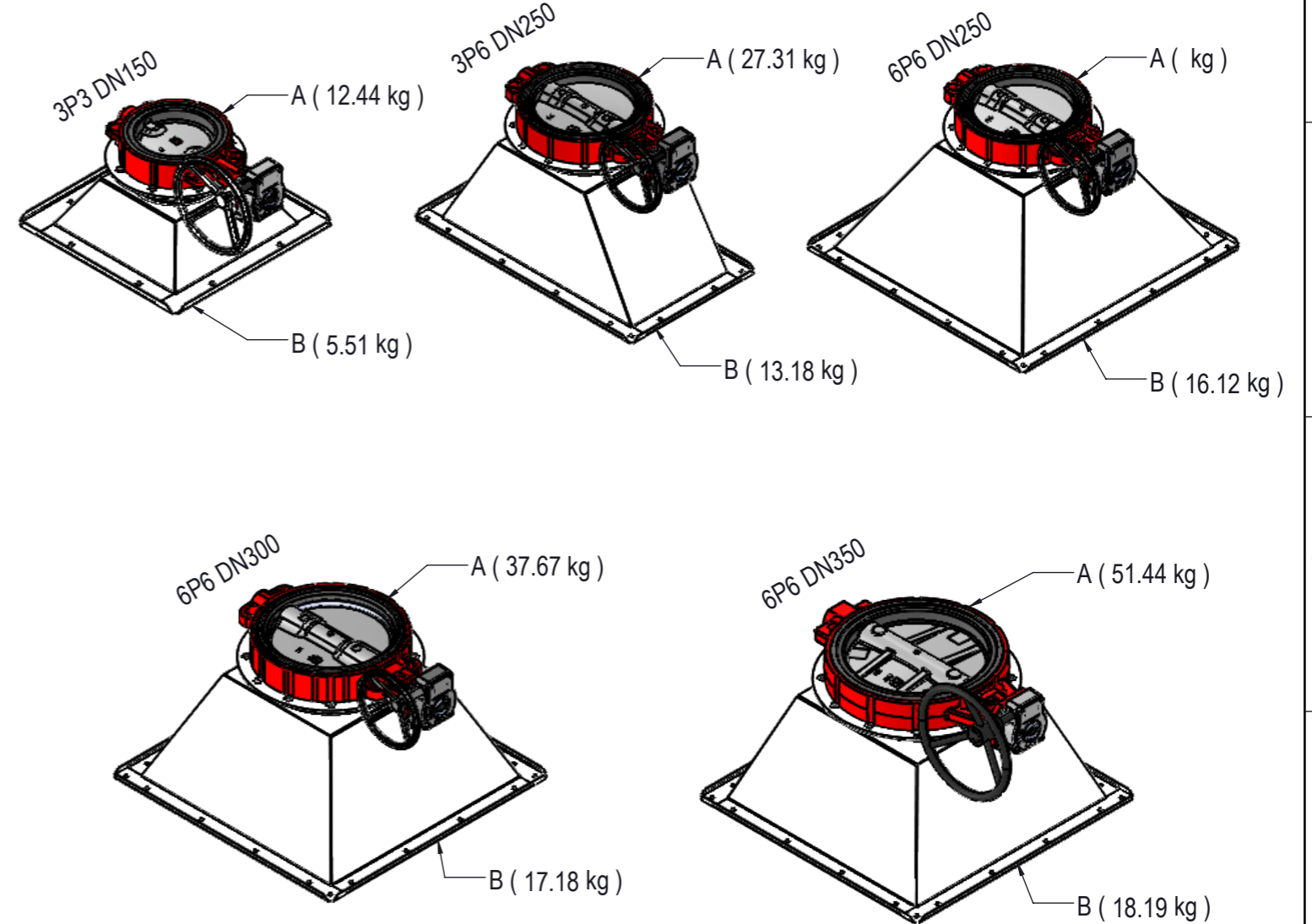
NB: The copyright of this drawing remains with Camfil. Contents must not be used, copied or disclosed to third parties without prior written consent. All rights reserved.



Reinforced assemblies - load bearing damper integration



STD Assemblies - not load bearing damper integration



Assemblies shown for illustration - components to be ordered separately as per BOM

| REV. | CHANGE | DATE | DESIGNED | APPROVED |
|------|----------------------|------------|----------|----------|
| C | ITEM NUMBERS CHANGED | 20.08.2021 | RIL | VPA |

| CAMSAFE STD BUTTERFLY VALVE DAMPER INTEGRATION | | | | | |
|--|--|--|--|--|--|
| LOAD BEARING DAMPER INTEGRATION | | | | | |
| Version | 3P3 DN150 | 3P6 DN250 | 6P6 DN250 | 6P6 DN300 | 6P6 DN350 |
| Size | A - 1072240 | A - 1072243 | A - 1072243 | A - 1072244 | A - 1068201 |
| Drawing | B - 5349-1150-870 C - 5349-9000-100 | B - 5349-1150-880 C - 5349-9000-101 | B - 5349-1100-870 C - 5349-9000-101 | B - 5349-1100-870 C - 5349-9000-102 | B - 5349-1100-890 C - 5349-9000-102 |
| Material / Item No. | A - see page 1 B - see drw. 5349-0000-107 C - see page 1 | A - see page 1 B - see drw. 5349-0000-107 C - see page 1 | A - see page 1 B - see drw. 5349-0000-107 C - see page 1 | A - see page 1 B - see drw. 5349-0000-107 C - see page 1 | A - see page 1 B - see drw. 5349-0000-107 C - see page 1 |
| NOT LOAD BEARING DAMPER INTEGRATION | | | | | |
| Version | 3P3 DN150 | 3P6 DN250 | 6P6 DN250 | 6P6 DN300 | 6P6 DN350 |
| Size | A - 1072240 | A - 1072243 | A - 1072243 | A - 1072244 | A - 1068201 |
| Drawing | B - 5349-1150-830 | B - 5349-1150-830 | B - 5349-1100-830 | B - 5349-1100-821 | B - 5349-1100-824 |
| Material / Item No. | A - see page 1 B - see drw. 5349-0000-107 | A - see page 1 B - see drw. 5349-0000-107 | A - see page 1 B - see drw. 5349-0000-107 | A - see page 1 B - see drw. 5349-0000-107 | A - see page 1 B - see drw. 5349-0000-107 |

| | | | | |
|---|-----------|---------------------------|--|--------|
| General tolerances ISO 2768 - vL unless otherwise specified | | European Metal Center | DESCRIPTION | |
| DIMENSION | TOLERANCE | | CamSafe Damper STD Scope free standing integration | |
| < 30 | ± 1 | PROJECT | LAST REVISION | WEIGHT |
| > 30 to 120 | ± 1,5 | - | 20.08.2021 | - |
| > 120 to 400 | ± 2,5 | DRAWING REF. | SHEET | SIZE |
| > 400 to 1000 | ± 4 | 5349-0000-108 | 3/3 | A3 |
| > 1000 to 4000 | ± 6 | | | SCALE |
| > 4000 | ± 8 | | | 1:12 |
| Break sharp angles 0,5 to 2 | | | | |

NB: The copyright of this drawing remains with Camfil. Contents must not be used, copied or disclosed to third parties without prior written consent. All rights reserved.